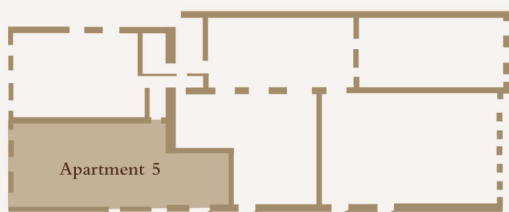
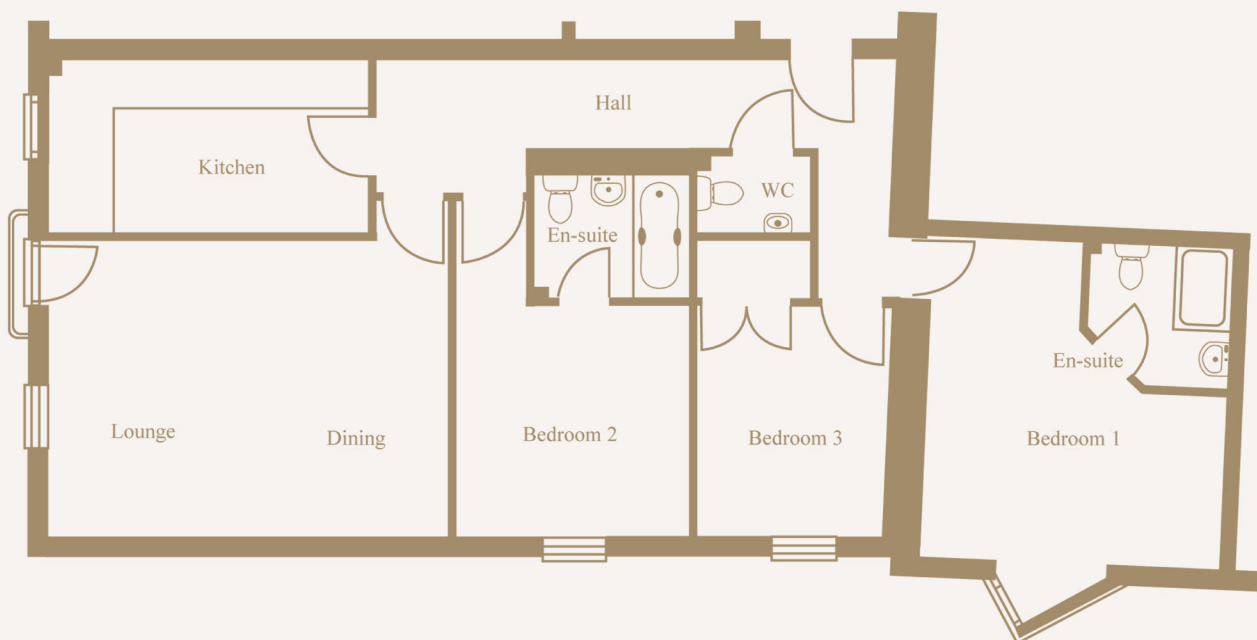


Apartment Five



Lounge/Dining	18' x 13'5"
Kitchen	14'1" x 7'7"
Bedroom one	15' x 14'1"
Bedroom two	10'6" x 15'3"
Bedroom three	10'6" x 8'6"



There will be a management company which will be owned and managed by the residents. It is necessary because there are shared parts of the development. The management company will deal with maintenance and repair of shared parts and the cost will be shared between residents. It is not an additional expense because the work it does (for example external decoration) is only work which residents would do themselves if they had sole responsibility for maintenance etc of a detached freehold property.

DISCLAIMER

The vendor and their agents give notice to anyone who reads these particulars that:

1. The particulars are prepared for the guidance only of prospective purchasers. They are intended to give a fair general description of the property but not to form an offer or contract.
2. Any information contained herein (whether in text, plans or images of any kind) should not be relied upon as being a statement or representation of fact.
3. Any areas, measurements or distances referred to herein are approximate only. Measurements are generally maximum room sizes.
4. The developers reserve the right to change the specification if necessary.